

DEPARTMENT OF THE ARMY TECHNICAL MANUAL

ORGANIZATIONAL MAINTENANCE REPAIR PARTS
AND SPECIAL TOOLS LIST

ORGANIZATIONAL MAINTENANCE REPAIR PARTS
AND SPECIAL TOOLS LIST

WELDING MACHINE, ARC: GENERATOR;
ELECTRIC MOTOR DRIVEN;
AC, 220V, 3PHASE, 60 HZ;
SINGLE OPERATOR; REMOTE CONTROL;
300 AMP DC ARC;
WHEEL MTD, 4 WHEELS, STEEL TIRES;
60 AMP AT 20V MIN, 375 AMP AT 40V MAC CURRENT
(LIBBY MODEL LA300)
FSN 3431-081-8059

HEADQUARTERS, DEPARTMENT OF THE ARMY
DECEMBER 1968

TECHNICAL MANUAL

HEADQUARTERS

DEPARTMENT OF THE ARMY

NO. 5-3431-207-20P

WASHINGTON, D. C., 23 December 1968

ORGANIZATIONAL MAINTENANCE REPAIR PARTS AND SPECIAL TOOLS LIST

WELDING MACHINE, ARC: GENERATOR;

ELECTRIC MOTOR DRIVEN; AC, 220V, 3 PHASE, 60HZ;

SINGLE OPERATOR; REMOTE CONTROL; 300AMP DC ARC;

WHEEL MTD, 4 WHEELS, STEEL TIRES;

60AMP AT 20V MIN, 375 AMP AT 40V MAX CURRENT

(LIBBY MODEL LA300)

FSN 3431-081-8059

Current as of 18 September 1968

	<i>Paragraph</i>	<i>Page</i>
SECTION I. INTRODUCTION		
Scope	1	iii
General	2	iii
Explanation of columns	3	iii
Special information	4	v
How to locate repair parts	5	v
Abbreviations	6	v
Federal supply codes for manufacturers	7	v
Report of equipment publication improvements	8	vi
II. PRESCRIBED LOAD ALLOWANCE		

***This manual together with TM 5-3431-207-35P supersedes TM 5-3431-207-25P, 24 June 1963.**

SECTION III. SPECIAL TOOLS, TEST AND SUPPORT EQUIPMENT FOR ORGANIZATIONAL MAINTENANCE (Not Applicable)

IV. REPAIR PARTS FOR ORGANIZATIONAL MAINTENANCE

Page

Group 10. Front Axle	
1000 Front axle assembly	1
11. Rear Axle.....	1
1100 Rear axle assembly.....	1
13. Wheels	
1311 Wheel assembly.....	1
22. Body Chassis or Hull and Accessory Items	
2202 Accessory items	2
2210 Data plates	3
44. Welding Equipment	
4402 Stator assembly.....	3
4403 Brush holder assembly	4
4405 Frame support, housing, carrier	5
4406 Ventilating, cooling system	6
4407 Control panels, housing	6
4410 Switching, timing and speed control.....	12
4411 Resistor components	14
4412 Transformer components.....	14
95. General Use Standardized	
9501 Bulk material	14
99. Parts Peculiar	
9901 Multi-listed parts	15

SECTION V. FEDERAL STOCK NUMBER AND REFERENCE NUMBER INDEX

**SECTION I
INTRODUCTION**

1. Scope

This manual lists repair parts required for the performance of organizational maintenance of the welder.

2. General

a. The Repair Parts List is arranged as follows:
 (1) Individual parts and major assemblies are listed alphabetically by item name within the numbered functional groups.

(2) Assembly components and subassemblies are indented and listed alphabetically by item name under major assemblies.

b. This Repair Parts and Special Tools List is divided into the following sections:

(1) *Prescribed Load Allowance (PLA)-Section II.* A consolidated listing of repair parts quantitatively allocated for initial stockage at the organizational level. *This is (a mandatory stockage allowance.*

(2) *Special Tools, Test and Support Equipment-Section III.* A list of special tools, test and support equipment authorized for the performance of maintenance at the organizational level. Not Applicable.

(3) *Repair Parts-Section IV.* A list of repair parts authorized for the performance of maintenance at the organizational level.

(4) *Federal Stock Number and Reference Number Index-Section V.* A list of Federal stock numbers followed by reference numbers in ascending alphanumeric sequence, cross-referenced to index number.

<i>Code</i>	<i>Explanation</i>
P	Applied to repair parts which are stocked in or supplied from DSA/GSA or Army supply system, and authorized for use at indicated maintenance categories.
M	Applied to repair parts which are not procured or stocked but are to be manufactured at indicated maintenance categories.
A	Applied to assemblies which are not procured or stocked as such but are made up of two or more units, each of which carry individual stock numbers and descriptions and are procured and stocked and can be assembled by units at indicated maintenance categories.
X	Applied to parts and assemblies which are not procured or stocked, the mortality of which is normally below that of the applicable end item, and the failure of which should result in retirement of the end item from the supply system.
X1	Applied to repair parts which are not procured or stocked, the requirement for which will be supplied by use of the next higher assembly or components.
X2	Applied to repair parts which are not stocked. The indicated maintenance category requiring such repair parts will attempt to obtain them through cannibalization; if not obtainable through cannibalization, such repair parts will be requisitioned with supporting justification through normal supply channels.
C	Applied to repair parts authorized for local procurements. If not obtainable from local procurement, such repair parts will be requisitioned through normal supply channels with a supporting statement of nonavailability from local procurement.
G	Applied to major assemblies that are procured with PEMA (Procurement Equipment Missile Army) funds for initial issue only to be used as exchange assemblies at DSU and GSU maintenance level. These assemblies will not be stocked above DSU and GSU or returned to depot supply level.

3. Explanation of Columns

The following provides an explanation of columns in the tabular lists in Sections II, III, and IV:

a. *Source, Maintenance and Recoverability Codes (SMR):*

(1) Source Code, indicates the selection status and source for the listed item. Source codes are:

Note

Source code is not shown on common hardware items known to be readily available in Army supply channels and through local procurement.

(2) Maintenance Code, indicates the lowest category of maintenance authorized to install the listed item. The maintenance level code is:

<i>Code</i>	<i>Explanations</i>
O	Organizational maintenance
	(3) Recoverability Code, indicates whether unserviceable items should be returned for recovery or salvage. Items not coded are expendable. Recoverability codes are:

<i>Code</i>	<i>Explanation</i>
R	Applied to repair parts and assemblies which are economically repairable at DSU and GSU activities and normally are furnished by supply on an exchange basis.
T	Applied to high dollar value recoverable repair parts which are subject to special handling and are issued on an exchange basis. Such repair parts normally are repaired or overhauled at depot maintenance activities.
U	Applied to repair parts specifically selected for salvage by reclamation units because of precious metal content, critical materials, high dollar value reusable casings or castings.
	(4) This column also lists, below the SMR code, an index number for each item in ascending numerical sequence, which is used to locate items in the publication when the Federal stock number and/or reference number is known.

b. Federal Stock Number: This column indicates the Federal stock number for the item.

c. Description: This column indicates the Federal item name and any additional description of the item required. A part number or other reference number is followed by the applicable five-digit Federal supply code for manufacturers in parentheses. Material required for manufacture or fabrication is identified.

d. Unit of Issue: This column indicates the unit used as a basis for issue, e.g., ea, pr, ft, yd, etc.

e. Quality Incorporated in Unit Pack: This column indicates the actual quantity contained in the unit pack.

f. Quantity Incorporated in Unit: This column indicates the quantity of the item used in the functional group.

g. Fifteen-Day Organizational Maintenance Allowance, Column (4) of Section II (and Column (7) of Section III and IV.

(1) The allowance columns are divided into four subcolumns. Indicated in each subcolumn is the quantity of items authorized for the number of equipments supported. Items authorized for use as required but not for initial stockage are identified with an asterisk in the allowance column.

(2) The quantitative allowances for organizational level of maintenance represents one initial prescribed load for a 15-day period for the number of equipments supported. Units and organizations authorized additional prescribed loads will multiply the number of prescribed loads authorized by the quantity of repair parts reflected in the appropriate density column applicable to the number of items supported to obtain the total quantity of repair parts authorized.

(3) Organizational units providing maintenance for more than 100 of these equipments shall determine the total quantity of parts required by converting the equipment quantity to a decimal factor by placing a decimal point before the next to last digit of the number to indicate hundredths, and multiplying the decimal factor by the parts quantity authorized in the 51-100 allowance column. Example, authorized allowance for 51-100 equipments is 40; for 150 equipments multiply 40 by 1.50 or 60 parts required.

(4) Subsequent changes to allowances will be limited as follows: No change in the range of items is authorized. If additional items are considered necessary, recommendation should be forwarded to U. S. Army Mobility Equipment Command for exception or revision to the allowance list. Revisions to the range of items authorized will be made by this Command based upon engineering experience, demand data, or TAERS information.

h. Illustration, Column (8). This column is divided as follows:

(1) *Figure Number Column (8a).* Indicates the figure number of the illustration in which the item is shown.

- (2) *Item Number, Column (8b).* Indicates the callout number used to reference the item in the illustration.

ascending alpha-numeric sequence cross-referenced to an index number.

- (2) *Second.* Using the Repair Part Listing, find the index number referenced in the Index of Federal Stock Numbers and Reference Numbers.

4. Special Information

a. Repair parts mortality has been based on 1,500 hours of operation per year.

b. Parts which require manufacture or assembly at a category higher than that authorized for installation will indicate in the source column the higher category.

c. The following publications pertain to the welder and its components:

TM 5-3431-207-15

Operator, organizations, field and depot maintenance manual.

TM 5-3431-207-35P

DS, GS, and depot maintenance repair parts and special tool lists.

5. How to Locate Repair Parts

a. When Federal Stock Number or Reference number is unknown:

- (1) *First.* Using the table of contents, determine the functional group within the repair part belongs.
- (2) *Second.* Find the illustration covering the functional group to which the repair part belongs.
- (3) *Third.* Identify the repair part on the illustration, and note the illustration figure and item number of the repair part.
- (4) *Fourth.* Using the Repair Parts Listing, find the functional group to which the repair part belongs and locate the illustration figure and item number noted on the illustration.

b. When Federal Stock number or reference number is known:

- (1) *First.* Using the Index of Federal Stock Numbers and Reference Numbers, find the pertinent Federal Stock Number or Reference Number. This index is in

6. Abbreviations

- EA.....each
- FT feet (foot)
- GRP.....Group
- in.....inch
- mtgmounting

7. Federal Supply Codes for Manufacturers

<i>Code</i>	<i>Manufacturer</i>
00287	C. E. M. Co., Inc.
01411	Westinghouse Electric Corp Motor and Gearing Div.
03743	Appleton Electric Co.
04618	American Pamcor Inc.
36024	Libby Welding Co., Inc.
36232	Lincoln Electric Co.
59730	Thomas and Betts Co., The
74545	Hubbell Harvey, Inc.
88044	Aeronautical Standards Group Dept of Navy and Air Force

8. Report of Equipment Publications Improvements

Report of errors, omissions, and recommendations for improving this publication by the individual user is encouraged. Reports should be submitted on DA Form 2028 (Recommended Changes to DA Publications) and forwarded direct to Commanding General, U. S. Army Mobility Equipment Command, ATTN: AMSME-MPP, 4300 Goodfellow Boulevard, St. Louis, Mo. 63120.

**SECTION II
PRESCRIBED LOAD ALLOWANCE**

(1) FEDERAL STOCK NUMBER	(2) DESCRIPTION	(3) Qty inc in unit pack	(4) 15-DAY ORGANIZATIONAL MAINTENANCE ALLOWANCE			
			(a) 1-5	(b) 6-20	(c) 21-50	(d) 51-100
	GROUP 22 -- BODY CHASSIS OR HULL AND ACCESSORY ITEMS					
	2202 - ACCESSORY ITEMS					
5940-955-9445	TERMINAL, CABLE					2
	GROUP 44 - WELDING EQUIPMENT					
	4403 - BRUSH HOLDER ASSEMBLY					
5977-088-7134	BRUSH HOLDER					2
5977-237-1582	BRUSH		2	7	13	25
5977-237-1609	BRUSH		2	3	6	13
6105-031-2836	SPRING, BRUSH				2	2
6115-587-5722	SPRING			2	2	3
	4411 - RESISTOR COMPONENTS					
5905-752-7467	RESISTOR					2
	GROUP 99 - PARTS PECULIAR					
	9901 - MULTI - LISTED PARTS					
5905-718-6063	RHEOSTAT					2

(1) SMR CODE ----- INDEX NO.	(2) FEDERAL STOCK NUMBER	(3) DESCRIPTION REFERENCE NO. & MFR. CODE USABLE ON CODE		(4) UNIT OF ISSUE	(5) QTY INC IN UNIT PACK	(6) QTY INC IN UNIT	(7) 15-DAY ORGANIZATIONAL MAINTENANCE ALW				(8) ILLUSTRATION	
							(a)	(b)	(c)	(d)	(a) FIG NO.	(b) ITEM NO.
							1-5	6-20	21-50	51-100		
		SECTION IV REPAIR PARTS FOR ORGANIZATIONAL MAINTENANCE										
00001		GROUP 10 - FRONT AXLE										
00002		1000 - FRONT AXLE ASSEMBLY										
X2 0 00003		AXLE, FRONT T6988-1 (36232)		EA		1					1	3
X2 0 00004		BRACKET: tongue mtg T7233 (36232)		EA		1					1	8
0 00005	5310-010-3028	NUT: tongue bracket mtg		EA		2	*	*	*	*	1	7
0 00006	5315-282-1448	PIN: tongue to bracket		EA		1	*	*	*	*	1	2
0 00007 00008	5305-725-4183	SCREW; tongue bracket mtg		EA		2	*	*	*	*	1	1
		GROUP 11 - REAR AXLE										
00009		1100 - REAR AXLE ASSEMBLY										
0 00010	5310-010-3028	NUT: rear axle mtg		EA		2	*	*	*	*	2	7
0 00011	5305-725-4183	SCREW: rear axle mtg		EA		2	*	*	*	*	2	1
0 00012 00013	5310-017-8599	WASHER: rear axle mtg		EA		4	*	*	*	*	2	2
		GROUP 13 - WHEELS										
00014		1311 - WHEEL ASSEMBLY										
0 00015	5315-282-1448	PIN: front wheel mtg		EA		2	*	*	*	*	1	2
0 00016	5315-282-1448	PIN: rear wheel mtg		EA		2	*	*	*	*	2	6
X2 0 00017		RETAINER, FRONT WHEEL S9262-34 (36232)		EA		2		SEE	GRP	9901	1	5
X2 0 00018		RETAINER, REAR WHEEL S9262-34 (36232)		EA		2		SEE	GRP	9901	2	5

(1) SMR CODE ----- INDEX NO.	(2) FEDERAL STOCK NUMBER	(3) DESCRIPTION REFERENCE NO. & MFR. CODE USABLE ON CODE		(4) UNIT OF ISSUE	(5) QTY INC IN UNIT PACK	(6) QTY INC IN UNIT	(7) 15-DAY ORGANIZATIONAL MAINTENANCE ALW				(8) ILLUSTRATION	
							(a) 1-5	(b) 6-20	(c) 21-50	(d) 51-100	(a) FIG NO.	(b) ITEM NO.
X2 0 00019		ROLLER, FRONT WHEEL T7208 (36232)		EA		34		SEE	GRP	9901	1	6
X2 0 00020		ROLLER, REAR WHEEL T7208 (36232)		EA		34		SEE	GRP	9901	2	4
X2 0 00021		WHEEL, FRONT S6116 (36232)		EA		2					1	4
X2 0 00022		WHEEL, REAR S5717 (36232)		EA		2					2	3
00023		GROUP 22 - BODY, CHASSIS OR HULL AND ACCESSORY ITEMS										
00024		2202 - ACCESSORY ITEMS										
P 0 00025	3431-954-4215	CABLE ASSEMBLY, ELECTRODE LA300-1832 (36024)		EA		1	*	*	*	*	3	3
P 0 00026	3431-954-4216	CABLE ASSEMBLY, GROUND LA300-1831 (36024)		EA		1	*	*	*	*	3	1
M 0 00027		CABLE, POWER MANUFACTURE FROM:		EA		1					3	2
P 0 00028	6145-807-8257	CABLE, POWER, ELECTRICAL (100 ft. required)		FT				SEE	GRP	9501		
X2 0 00029	5975-258-0126	CLAMP, GROUND		EA		1					3	7
0 00030	5310-685-1429	NUT: ground clamp cable attaching		EA		1	*	*	*	*	3	8
0 00031	5305-071-1767	SCREW: ground clamp cable attaching		EA		1	*	*	*	*	3	9
X2 0 00032	3431-986-8450	CONTROL, REMOTE EOW1000 (36024)		EA		1					4	
X2 0 00033		CABLE, REMOTE CONTROL EOW1003 (36232)		EA		1					4	1
X2 0 00034		CASE, REMOTE CONTROL EPW1001 (36024)		EA		1					4	2
X2 0 00035		HANDLE, RHEOSTAT S8158 (36232)		EA		1		SEE	GRP	9901	4	5

(1) SMR CODE ----- INDEX NO.	(2) FEDERAL STOCK NUMBER	(3) DESCRIPTION REFERENCE NO. & MFR. CODE USABLE ON CODE		(4) UNIT OF ISSUE	(5) QTY INC IN UNIT PACK	(6) QTY INC IN UNIT	(7) 15-DAY ORGANIZATIONAL MAINTENANCE ALW				(8) ILLUSTRATION	
							(a)	(b)	(c)	(d)	(a) FIG NO.	(b) ITEM NO.
							1-5	6-20	21-50	51-100		
X2 0 00036		PLATE, RHEOSTAT DIAL M10088 (36232)		EA		1		SEE	GRP	9901	4	3
P 0 00037	5905-718-6063	RHEOSTAT M5090C (36232)		EA		1		SEE	GRP	9901	4	7
0 00038	5307-207-1867	SCREW: cover attaching		EA		4	*	*	*	*	4	8
0 00039	5305-608-8307	SCREW: plate and rheostat mtg		EA		2	*	*	*	*	4	4
X2 0 00040	3431-994-9301	SETSCREW AN565D1024H3 (88044)		EA		1					4	6
P 0 00041	3442-618-0115	HOLDER ASSEMBLY,ELECTRICAL INS (36232)		EA		1	*	*	*	*	3	5
0 00042	5310-985-5844	NUT: electrode holder cable attaching		EA		1					3	6
0 00043	5305-012-5673	SCREW: electrode holder handle attaching		EA		1					3	11
P 0 00044	5940-955-9445	TERMINAL, CABLE T120 (36024)		EA		3	*	*	*	2	3	4
00045		2210 - DATA PLATES										
X2 0 00046		NAMEPLATE, ELECTRODE T3961 (36232)		EA		1						
X2 0 00047		NAMEPLATE, WORK T3962 (36232)		EA		1						
X2 0 00048		PLATE, IDENTIFICATION T10990 (36232)		EA		1						
0 00049 00050	5305-057-9610	SCREW: nameplates mtg		EA		4	*	*	*	*		
00051		GROUP 44 - WELDING EQUIPMENT 4402 - STATOR ASSEMBLY										
0 00052	5310-176-8137	NUT: wiring harness lead attaching to exciter coil lead		EA		1	*	*	*	*		

(1) SMR CODE ----- INDEX NO.	(2) FEDERAL STOCK NUMBER	(3) DESCRIPTION REFERENCE NO. & MFR. CODE USABLE ON CODE		(4) UNIT OF ISSUE	(5) QTY INC IN UNIT PACK	(6) QTY INC IN UNIT	(7) 15-DAY ORGANIZATIONAL MAINTENANCE ALW				(8) ILLUSTRATION	
							(a)	(b)	(c)	(d)	(a)	(b)
							1-5	6-20	21-50	51-100	FIG NO.	ITEM NO.
0 00053	5305-984-6206	SCREW: wiring harness leads attaching to exciter coil lead		EA		1	*	*	*	*		
0 00054 00055	5310-011-5545	WASHER: wiring harness lead attaching to exciter coil lead		EA		1	*	*	*	*		
		4403 - BRUSH HOLDER ASSEMBLY										
P 0 00056	5977-237-1609	BRUSH, EXCITER T6968 (36232)		EA		2	2	3	6	13	6	11
P 0 00057	5977-088-7134	BRUSH HOLER ASSEMBLY, MAIN M6964-9A (36232)		EA		4	*	*	*	2	7	1
0 00058	5306-225-8494	BOLT: main brush holder plate to stud		EA		4	*	*	*	*	5	7
X2 0 00059		PLATE, MAIN BRUSH HOLDER RETAINER M6964-1B (36232)		EA		4					5	10
A 0 00060		SCREW ASSEMBLED WASHER:brush holder stud		EA		4					5	1
0 00061	5305-269-3209	SCREW: main brush holder		EA		4	*	*	*	*		
0 00062	5310-543-2705	WASHER: main brush holder		EA		4	*	*	*	*		
A 0 00063		SCREW ASSEMBLED WASHER: brush spring mtg		EA		8					5	12
0 00064	5305-988-1721	SCREW: main brush spring mtg		EA		8	*	*	*	*		
0 00065	5310-012-0214	WASHER: main brush spring mtg		EA		8	*	*	*	*		
0 00065	5305-984-5674	SCREW: main brush holder plate to stud		EA		4	*	*	*	*	5	8
P 0 00067	6115-587-5722	SPRING: main brush holder T8495 (36232)		EA		8	*	2	2	3	5	5
X2 0 00068		STUD: main brush holder M6963-6 (36232)		EA		4					5	6
X2 0 00069	5970-587-5717	TUBE, INSULATOR T1450 (36232)		EA		4					5	4
X2 0 00070		WASHER: insulator T4479 (36232)		EA		4					5	3

(1) SMR CODE ----- INDEX NO.	(2) FEDERAL STOCK NUMBER	(3) DESCRIPTION REFERENCE NO. & MFR. CODE USABLE ON CODE		(4) UNIT OF ISSUE	(5) QTY INC IN UNIT PACK	(6) QTY INC IN UNIT	(7) 15-DAY ORGANIZATIONAL MAINTENANCE ALW				(8) ILLUSTRATION	
							(a) 1-5	(b) 6-20	(c) 21-50	(d) 51-100	(a) FIG NO.	(b) ITEM NO.
0 00086	5310-013-1395	NUT: end bracket cover		EA		2	*	*	*	*	7	4
0 00087	5310-013-1395	NUT: frame cover		EA		2	*	*	*	*	11	1
X2 0 00088	4730-044-4569	PLUG: exciter end outer dust cover		EA		1						
X2 0 00089	4730-044-4569	PLUG: generator end outer dust cover		EA		1					7	11
0 00090	5305-988-9265	SCREW: end bracket, cover		EA		2	*	*	*	*	7	8
0 00091	5305-052-6921	SCREW: exciter end cover mtg		EA		2	*	*	*	*	6	1
0 00092	5305-988-9265	SCREW: frame cover		EA		2	*	*	*	*	11	3
0 00093	5310-147-2065	WASHER: exciter end cover mtg		EA		1	*	*	*	*	6	2
00094		4406 - VENTILATING, COOLING SYSTEM										
X2 0 00095		BLOWER L2944-2 (36232)		EA		1					7	9
X2 0 00096		GUARD, FAN S4519 (36232)		EA		1					7	5
X2 0 00097		NUT: blower T3107 (36232)		EA		1					7	3
X2 0 00098		RING, SNAP T10210-1 (36232)		EA		1					7	10
0 00099	5305-965-7306	SCREW: fan guard		EA		3	*	*	*	*	7	6
X2 0 00100		WASHER: blower T3110 (36232)		EA		1					7	2
00101		4407 - CONTROL PANELS, HOUSING										
X2 0 00102	5975-296-86	CLAMP, CABLE, BULKHEAD 15234 (03743)		EA		1					8	5
X2 0 00103	5340-598-8062	CLAMP, LOOP MS21919G4 (96906)		EA		1					9	32

(1) SMR CODE ----- INDEX NO.	(2) FEDERAL STOCK NUMBER	(3) DESCRIPTION REFERENCE NO. & MFR. CODE USABLE ON CODE		(4) UNIT OF ISSUE	(5) QTY INC IN UNIT PACK	(6) QTY INC IN UNIT	(7) 15-DAY ORGANIZATIONAL MAINTENANCE ALW				(8) ILLUSTRATION	
							(a)	(b)	(c)	(d)	(a) FIG NO.	(b) ITEM NO.
							1-5	6-20	21-50	51-100		
P 0 00104	5935-161-9764	CONNECTOR, RECEPTACLE 7210 (74545)		EA		1	*	*	*	*	9	9
0 00105 X2 0 00106	5305-889-3002	SCREW: receptacle wire attaching		EA		2	*	*	*	*	9	28
X2 0 00106		COVER, CONTROL BOX M5939 (36232)		EA		1					9	2
X2 0 00107		DOOR, CONTROL BOX S6650 (36232)		EA		1					8	1
X2 0 00108		INSULATOR, CONNECTING STRAP T3846 (36232)		EA		1					10	23
X2 0 00109		INSULATOR, CONNECTING STRAP T7843 (36232)		EA		1					10	15
X2 0 00110		LEAD CIRCUIT BREAKER TO STARTER ASSEMBLY LA2175 (36024)		EA		3					8	9
M 0 00111		LEAD, LOCAL-REMOTE SWITCH MANUFACTURE FROM:		EA		1					9	5
X2 0 00112	5940-155-9686	TERMINAL C36 (59730)		EA		2						
P 0 00113 M 0 00114	6145-578-7521	WIRE, ELECTRICAL (3 in. required)		FT				SEE	GRP	9501		
X2 0 00115	5940-177-7910	TERMINAL B86G (59730)		EA		1					9	6
X2 0 00116		TERMINAL B87G (59730)		EA		1						
P 0 00117	6145-195-5608	WIRE, ELECTRICAL (6 in. required)		FT				SEE	GRP	9501		

(1) SMR CODE ----- INDEX NO.	(2) FEDERAL STOCK NUMBER	(3) DESCRIPTION REFERENCE NO. & MFR. CODE USABLE ON CODE		(4) UNIT OF ISSUE	(5) QTY INC IN UNIT PACK	(6) QTY INC IN UNIT	(7) 15-DAY ORGANIZATIONAL MAINTENANCE ALW				(8) ILLUSTRATION	
							(a)	(b)	(c)	(d)	(a) FIG NO.	(b) ITEM NO.
							1-5	6-20	21-50	51-100		
M 0 00118		LEAD, LOCAL-REMOTE SWITCH TO RECEPTACLE MANUFACTURE FROM:		EA		1					9	29
X2 0 00119	5940-177-7910	TERMINAL B86G (59730)		EA		1						
X2 0 00120		TERMINAL B87G (59730)		EA		1						
P 0 00121 M 0 00122	6145-195-5608	WIRE, ELECTRICAL (7 in. required) LEAD, LOCAL-REMOTE SWITCH TO RHEOSTAT MANUFACTURE FROM:		FT EA		 1		SEE	GRP	9501		8
X2 0 00123	5940-177-7910	TERMINAL B86G (59730)		EA		1						
X2 0 00124		TERMINAL B87G (59730)		EA		1						
P 0 00125 M 0 00126	6145-195-5608	WIRE, ELECTRICAL (7 in. required) LEAD, RESISTOR TO POLARITY SWITCH S6751-4 (36232) MANUFACTURE FROM:		FT EA		 1		SEE	GRP	9501	10	10
X2 0 00127	5940-020-0005	TERMINAL		EA		2					10	11
P 0 00128 M 0 00129	6145-578-7521	WIRE, ELECTRICAL (9 in. required) LEAD, RESISTOR TO POLARITY SWITCH S6751-3 (36232) MANUFACTURE FROM:		FT EA		 1		SEE	GRP	9501		12
X2 0 00130	5940-177-7910	TERMINAL B86G (59730)		EA		2					10	11
P 0 00131	6145-195-5608	WIRE, ELECTRICAL (7 in. required)		FT				SEE	GRP	9501		

(1) SMR CODE ----- INDEX NO.	(2) FEDERAL STOCK NUMBER	(3) DESCRIPTION REFERENCE NO. & MFR. CODE USABLE ON CODE		(4) UNIT OF ISSUE	(5) QTY INC IN UNIT PACK	(6) QTY INC IN UNIT	(7) 15-DAY ORGANIZATIONAL MAINTENANCE ALW				(8) ILLUSTRATION	
							(a)	(b)	(c)	(d)	(a) FIG NO.	(b) ITEM NO.
							1-5	6-20	21-50	51-100		
M 0 00132		LEAD, RHEOSTAT TO LOCAL-REMOTE SWITCH MANUFACTURE FROM:		EA		1					9	21
X2 0 00133	5940-177-7910	TERMINAL B86G (59730)		EA		1						
X2 0 00134		TERMINAL B87G (59730)		EA		1						
P 0 00135	6145-195-5608	WIRE, ELECTRICAL (9 in. required)		FT			SEE	GRP	9501			
M 0 00136		LEAD, RHEOSTAT TO RESISTOR MANUFACTURE FROM:		EA		1					9	22
X2 0 00137	5940-177-7910	TERMINAL B86G (59730)		EA		2						
P 0 00138	6145-195-5608	WIRE, ELECTRICAL (18 in. required)		FT			SEE	GRP	9501			
M 0 00139		LEAD, START-STOP SWITCH TO STARTER, STATIONARY CONTACT S6751-1 (36232) MANUFACTURE FROM:		EA		1					8	12
X2 0 00140	5940-636-7114	TERMINAL B85G (59730)		EA		1						
X2 0 00141	5940-050-6209	TERMINAL B71G (59730)		EA		1						
P 0 00142	6145-195-5608	WIRE, ELECTRICAL (17 in. required)		FT			SEE	GRP	9501			
M 0 00143		LEAD, VOLT-AMPAMETER TO ELECTRODE STRAP SHUNT MANUFACTURE FROM;		EA		1					9	38
X2 0 00144	5940-504-5878	TERMINAL 32994 (04618)		EA		1						
X2 0 00145	5940-155-9686	TERMINAL C36 (59730)		EA		1						
P 0 00146	6145-578-7521	WIRE, ELECTRICAL		FT			SEE	GRP	9501			

(1) SMR CODE ----- INDEX NO.	(2) FEDERAL STOCK NUMBER	(3) DESCRIPTION REFERENCE NO. & MFR. CODE USABLE ON CODE		(4) UNIT OF ISSUE	(5) QTY INC IN UNIT PACK	(6) QTY INC IN UNIT	(7) 15-DAY ORGANIZATIONAL MAINTENANCE ALW				(8) ILLUSTRATION	
							(a) 1-5	(b) 6-20	(c) 21-50	(d) 51-100	(a) FIG NO.	(b) ITEM NO.
M 0 00147		LEAD, VOLT-MTETR TO ELECTRODE STRAP SHUNT MANUFACTURE FROM:		EA		1					9	39
X2 0 00148	5940-504-5878	TERMINAL 32994 (04618)		EA		1						
X2 0 00149	5940-155-9686	TERMINAL C36 (59730)		EA		1						
P 0 00150 M 0 00151	6145-578-7521	WIRE, ELECTRICAL (6 in. required) LEAD, VOLT-AMPMET R TO OUTPUT STUD MANUFACTURE FROM:		EA	FT	1			SEE	GRP	9501	
X2 0 00152	5940-505-5878	TERMINAL 32994 (04618)		EA		1						
X2 0 00153	5940-504-5874	TERMINAL 35135 (04618)		EA		1						
P 0 00154	6145-578-7521	WIRE, ELECTRICAL (11 in. required)		FT				SEE	GRP	9501		
0 00155	5310-988-5844	NUT: electrode and output stud		EA		2	*	*	*	*	10	18
0 00156	5310-822-0984	NUT: electrode stud		EA		1	*	*	*	*		
0 00157	5310-176-8137	NUT: loop clamp and receptacle mtg, local-remote switch wire attaching		EA		3	*	*	*	*	9	3
0 00158	5310-685-1429	NUT: output and electrode studs		EA		2	*	*	*	*	10	25
0 00159	5310-822-0984	NUT: output stud		EA		1	*	*	*	*		
0 00160	5310-685-1429	NUT: reactor strap to electrode stud		EA		1	*	*	*	*		
0 00161	5310-685-1429	NUT: rear control box mtg stud		EA		1	*	*	*	*	10	14
0 00162	5310-176-8137	NUT: shunt wire attaching		EA		2	*	*	*	*	10	5
0 00163	5310-275-1706	NUT: volt-ampmeter mtg		EA		3	*	*	*	*	9	27
0 00164	5310-059-4264	NUT: volt-ampmeter wire attaching		EA		3	*	*	*	*	9	36

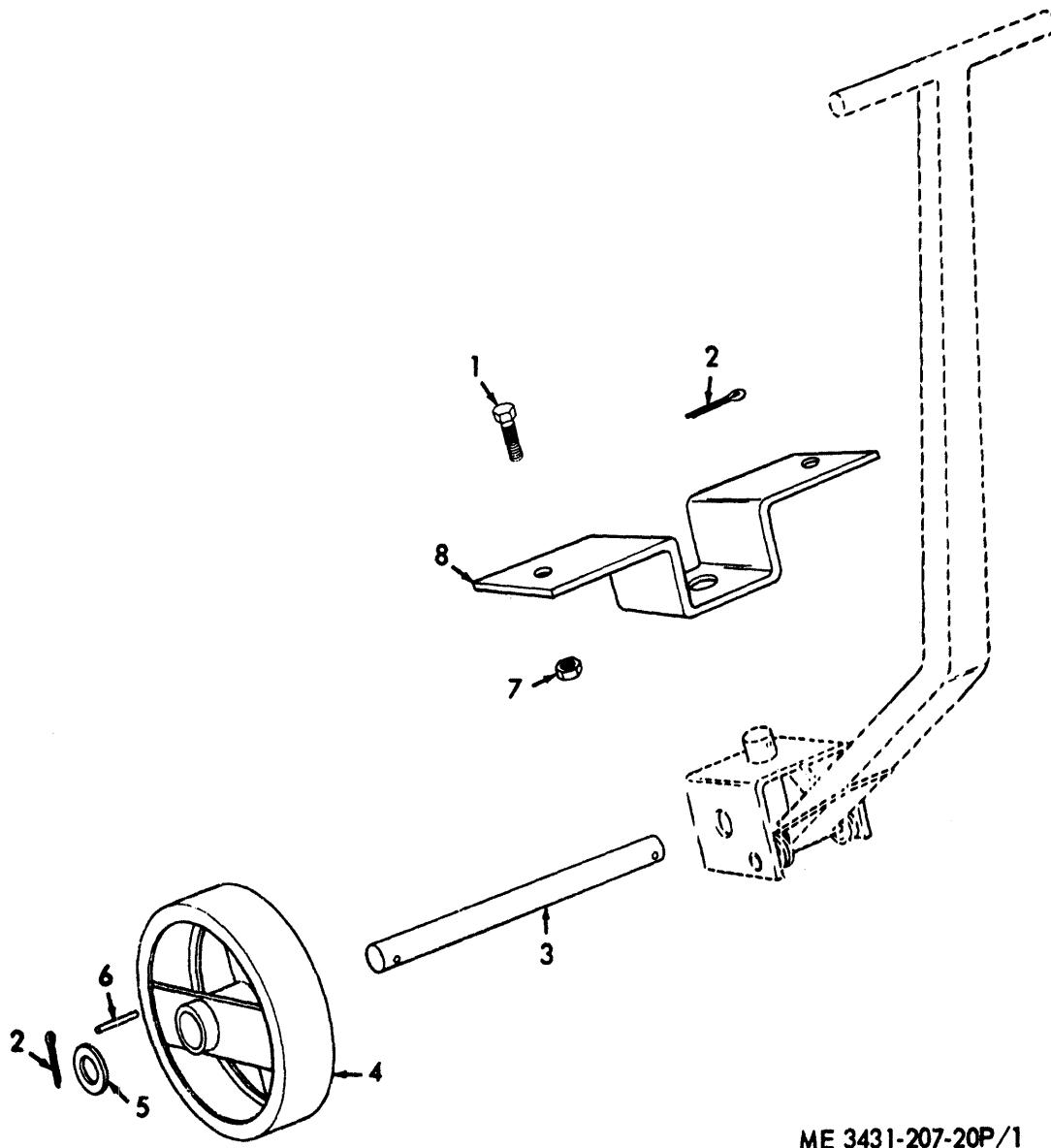
(1) SMR CODE ----- INDEX NO.	(2) FEDERAL STOCK NUMBER	(3) DESCRIPTION REFERENCE NO. & MFR. CODE USABLE ON CODE		(4) UNIT OF ISSUE	(5) QTY INC IN UNIT PACK	(6) QTY INC IN UNIT	(7) 15-DAY ORGANIZATIONAL MAINTENANCE ALW				(8) ILLUSTRATION	
							(a)	(b)	(c)	(d)	(a) FIG NO.	(b) ITEM NO.
							1-5	6-20	21-50	51-100		
X2 0 00165 0	5305-840-6694	ROD, CONTROL BOX DOOR		EA		1					8	4
00166 0	5305-988-1721	SCREW: cover attaching		EA		6	*	*	*	*	9	1
00167 0	5305-988-1721	SCREW: electrical lead attaching to stationary contacts		EA		3	*	*	*	*	8	7
00168 0	5305-988-1721	SCREW: lead attaching to stationary contact		EA		1	*	*	*	*	8	13
00169 0	5305-042-0478	SCREW: local-remote switch wire attaching		EA		4	*	*	*	*	9	7
00170 0	5305-042-0478	SCREW: loop clamp mtg		EA		1	*	*	*	*	9	31
00171 0	5305-010-0157	SCREW: output stud strap attaching		EA		1	*	*	*	*	10	20
00172 0	5305-044-4153	SCREW: reactor strap to electrode strap		EA		1	*	*	*	*		
00173 0	5305-608-8307	SCREW: receptacle mtg		EA		2	*	*	*	*	9	33
00174 0	5305-608-8307	SCREW: shunt wire attaching		EA		2	*	*	*	*	10	26
00175 0	5305-836-8476	SCREW: tapping, output stud strap insulator mtg		EA		1	*	*	*	*	10	22
00176 P 0	5305-637-1125	SCREW: volt-ampmeter mtg		EA		2	*	*	*	*	9	14
00177	6625-954-2873	SHUNT S6602-2 (36232)		EA		1	*	*	*	*		
X2 0 00178		STRAP, CONNECTION T8141 (36232)		EA		1					10	16
X2 0 00179		STRAP, CONNECTION T7845 (36232)		EA		1					10	21
X2 0 00180		STUD ASSEMBLY, OUTPUT T8230-1 (36232)		EA		1					10	
X2 0 00181	6115-980-5837	BUSHING, INSULATING T5411 (36232)		EA		1		SEE	GRP	9901		
X2 0 00182	5307-984-7541	STUD T6931-2 (36232)		EA		1		SEE	GRP	9901		

(1) SMR CODE ----- INDEX NO.	(2) FEDERAL STOCK NUMBER	(3) DESCRIPTION REFERENCE NO. & MFR. CODE USABLE ON CODE		(4) UNIT OF ISSUE	(5) QTY INC IN UNIT PACK	(6) QTY INC IN UNIT	(7) 15-DAY ORGANIZATIONAL MAINTENANCE ALW				(8) ILLUSTRATION	
							(a)	(b)	(c)	(d)	(a) FIG NO.	(b) ITEM NO.
							1-5	6-20	21-50	51-100		
X2 0 00183		WASHER: insulating T2719 (36232)		EA		1		SEE	GRP	9901		
0 00184	5310-012-0384	WASHER: output stud		EA		1	*	*	*	*		
X2 0 00185	5307-984-7541	STUD, ELECTRODE OUTPUT T6931-2 (36232)		EA		1		SEE	GRP	9901	10	17
X2 0 00186	5975-027-4581	TYRAP, ELECTRICAL LEADS TY25 (59730)		EA		3					8	8
P 0 00187	6625-954-2709	VOLT-AMPMETER S4934 (36232)		EA		1	*	*	*	*	9	15
0 00188	5310-012-0384	WASHER: electrode stud		EA		1	*	*	*	*		
X2 0 00189		WASHER: electrode stud T2719 (36232)		EA		1		SEE	GRP	9901		
X2 0 00190		WASHER: electrode stud T8485 (36232)		EA		1		SEE	GRP	9901		
0 00191	5310-167-0834	WASHER: loop clamp mtg		EA		1	*	*	*	*	9	24
0 00192	5310-879-6493	WASHER: output and electrode studs		EA		2	*	*	*	*	10	24
0 00193	5310-082-1404	WASHER: volt-ampmeter mtg		EA		3	*	*	*	*	9	25
0 00194	5310-010-6495	WASHER: volt-ampmeter mtg		EA		3	*	*	*	*	9	26
0 00195	5310-205-7782	WASHER: volt-ampmeter wire attaching		EA		3	*	*	*	*	9	37
00196		4410 - SWITCHING, TIMING AND SPEED CONTROL										
P 0 00197	5925-954-4211	CIRCUIT BREAKER 20E1525 (01411)		EA		1	*	*	*	*	8	11
X2 0 00198		CLIP, POLARITY SWITCH ROD S7297-1 (36232)		EA		1					9	30
X2 0 00199		HANDLE, POLARITY SWITCH T5418 (36232)		EA		1					9	11

(1) SMR CODE ----- INDEX NO.	(2) FEDERAL STOCK NUMBER	(3) DESCRIPTION REFERENCE NO. & MFR. CODE USABLE ON CODE		(4) UNIT OF ISSUE	(5) QTY INC IN UNIT PACK	(6) QTY INC IN UNIT	(7) 15-DAY ORGANIZATIONAL MAINTENANCE ALW				(8) ILLUSTRATION	
							(a) 1-5	(b) 6-20	(c) 21-50	(d) 51-100	(a) FIG NO.	(b) ITEM NO.
0 00200	5310-176-8137	NUT: local-remote switch wire attaching		EA		4	*	*	*	*	9	3
0 00201	5310-176-8137	NUT: polarity switch mtg		EA		2	*	*	*	*	10	5
0 00202	5305-042-0479	NUT: start-stop switch mtg		EA		2	*	*	*	*	8	6
X2 0 00203		PIN: polarity switch handle 3-32X3-4 (00287)		EA		1					9	10
X2 0 00204		ROD, POLARITY SWITCH T6380 (36232)		EA		1					10	6
0 00205	5305-151-1229	SCREW: circuit breaker mtg		EA		4	*	*	*	*	8	3
0 00206	5305-059-8249	SCREW: local-remote switch mtg		EA		2	*	*	*	*	9	35
0 00207	5305-042-0478	SCREW: local-remote switch wire attaching		EA		4	*	*	*	*	9	7
0 00208	5305-984-6212	SCREW: polarity switch mtg		EA		2	*	*	*	*	10	1
0 00209	5305-984-6217	SCREW: start-stop switch mtg		EA		2	*	*	*	*	8	2
P 0 00210	5930-960-2786	SWITCH, LOCAL CONTROL 9623 (74545)		EA		1	*	*	*	*	9	4
P 0 00211	5930-961-1192	SWITCH, POLARITY 49431 (36232)		EA		1	*	*	*	*	10	2
0 00212	5305-059-8248	SCREW: polarity switch wire attaching		EA		6	*	*	*	*	10	19
X2 0 00213	3431-960-2716	SWITCH, START-STOP M6574A (36232)		EA		1					8	11
0 00214	5305-151-1229	SCREW: electrical lead attaching to start-stop switch		EA		3	*	*	*	*	8	14
0 00215	5310-045-3296	WASHER: polarity, switch mtg		EA		2	*	*	*	*	10	4
0 00216	5310-167-0834	WASHER: polarity, switch mtg		EA		2	*	*	*	*	10	3

(1) SMR CODE ----- INDEX NO.	(2) FEDERAL STOCK NUMBER	(3) DESCRIPTION REFERENCE NO. & MFR. CODE USABLE ON CODE		(4) UNIT OF ISSUE	(5) QTY INC IN UNIT PACK	(6) QTY INC IN UNIT	(7) 15-DAY ORGANIZATIONAL MAINTENANCE ALW				(8) ILLUSTRATION	
							(a) 1-5	(b) 6-20	(c) 21-50	(d) 51-100	(a) FIG NO.	(b) ITEM NO.
00217		4411 - RESISTOR COMPONENTS										
X2 0 00218		HANDLE, RHEOSTAT S8158 (36232)		EA		1		SEE	GRP	9901	9	18
0 00219	5310-639-1098	NUT: rheostat wire attaching		EA		2	*	*	*	*	9	23
0 00220	5310-176-8137	NUT: resistor mtg		EA		1	*	*	*	*	10	5
0 00221	5310-616-6949	NUT: resistor wire attaching		EA		2	*	*	*	*	10	13
X2 0 00222		PLATE, DIAL M10088 (36232)		EA		1		SEE	GRP	9901	9	19
P 0 00223	5905-752-7467	RESISTOR, FIXED FIELD WIRE WOUND T8280 (36232)		EA		1	*	*	*	2	10	8
X1 00224		WASHER: resistor mtg		EA		1	*	*	*	*	10	9
P 0 00225	5905-718-8063	RHEOSTAT M50906C (36232)		EA		1		SEE	GRP	9901	9	20
0 00226	5305-608-8307	SCREW: dial plate and rheostat mtg		EA		2	*	*	*	*	9	16
0 00227	5305-817-5443	SCREW: resistor mtg		EA		1	*	*	*	*	10	7
X2 0 00228	3431-994-9301	SETSCREW: rheostat handle mtg AN565D1024H3 (88044)		EA		1					9	17
00229		4412 - TRANSFORMER COMPONENTS										
X2 0 00230		HANDLE, REACTOR S7995-3 (36232)		EA		1					9	12
00231		GROUP 95 - GENERAL USE STANDARDIZED PARTS										
00232		9501 - BULK MATERIAL										
P 0 00233	6145-807-8257	CABLE, POWER ELECTRICAL		FT			*	*	*	*		
P 0 00234	6145-195-5608	WIRE, ELECTRICAL		FT			*	*	*	*		

(1) SMR CODE ----- INDEX NO.	(2) FEDERAL STOCK NUMBER	(3) DESCRIPTION REFERENCE NO. & MFR. CODE USABLE ON CODE		(4) UNIT OF ISSUE	(5) QTY INC IN UNIT PACK	(6) QTY INC IN UNIT	(7) 15-DAY ORGANIZATIONAL MAINTENANCE ALW				(8) ILLUSTRATION	
							(a)	(b)	(c)	(d)	(a) FIG NO.	(b) ITEM NO.
							1-5	6-20	21-50	51-100		
P 0 00235 00236 00237	6145-578-7521	WIRE, ELECTRICAL GROUP 99 - PARTS PECULIAR 9901 - MULIT-LISTED PARTS		FT			*	*	*	*		
X2 0 00238	6115-980-5837	BUSHING T5411 (36232)		EA		2						
X2 0 00239		HANDLE S8158 (36232)		EA		2						
X2 0 00240		PLATE M10088 (36232)		EA		2						
X2 0 00241		RETAINER S9262-34 (36232)		EA		4						
P 0 00242	5905-718-6063	RHEOSTAT M5090C (36232)		EA		2	*	*	*	2		
X2 0 00243		ROLLER T7208 (36232)		EA		68						
X2 0 00244		STUD T6931-2 (36232)		EA		2						
X2 0 00245		WASHER T8485 (36232)		EA		2						
X2 0 00246		WASHER T2719 (36232)		EA		4						

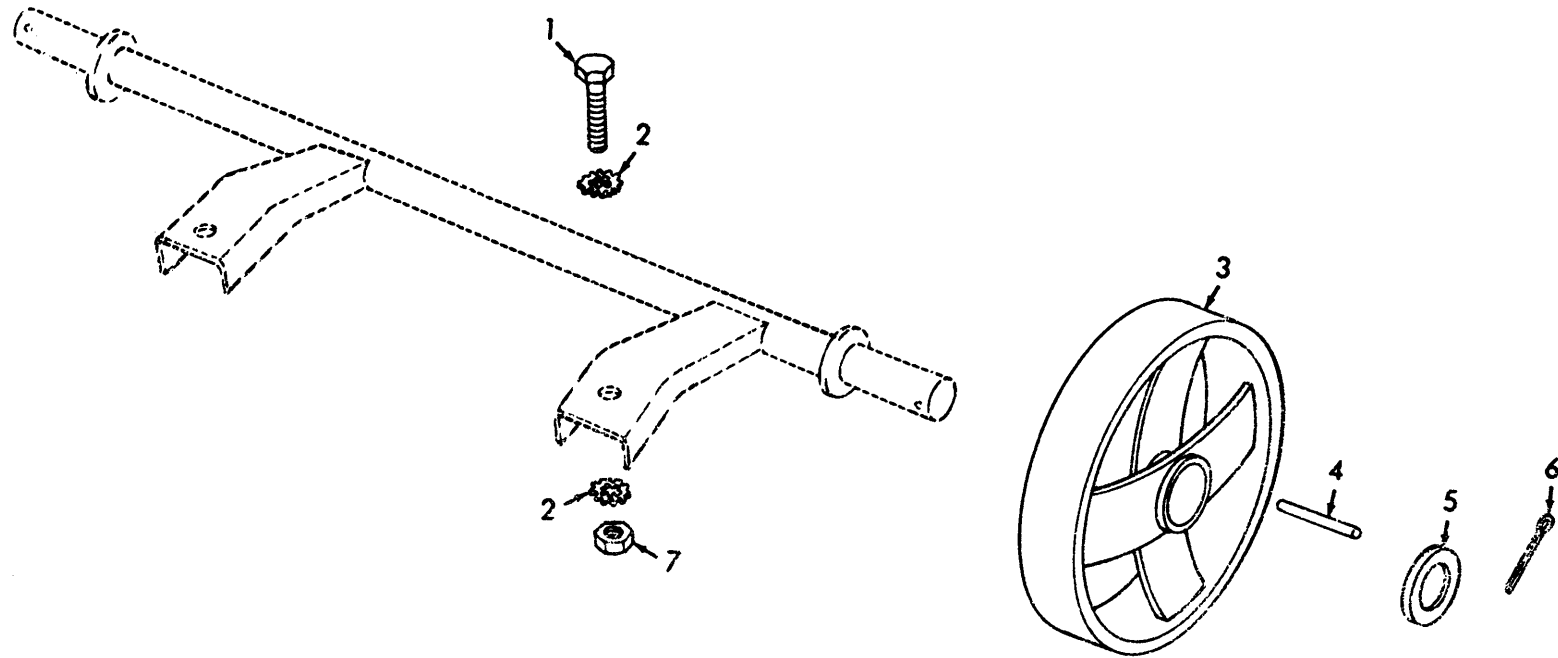


ME 3431-207-20P/1

Figure 1. Front Axle, Wheels, and Tongue.

INDEX TO PARTS, FIGURE 1

Reference Number	Functional Group	Item Name
1	1000	SCREW
2	1000	PIN
2	1311	PIN
3	1000	AXLE
4	1311	WHEEL
5	1311	RETAINER
6	1311	ROLLER
7	1000	NUT
8	1000	BRACKET

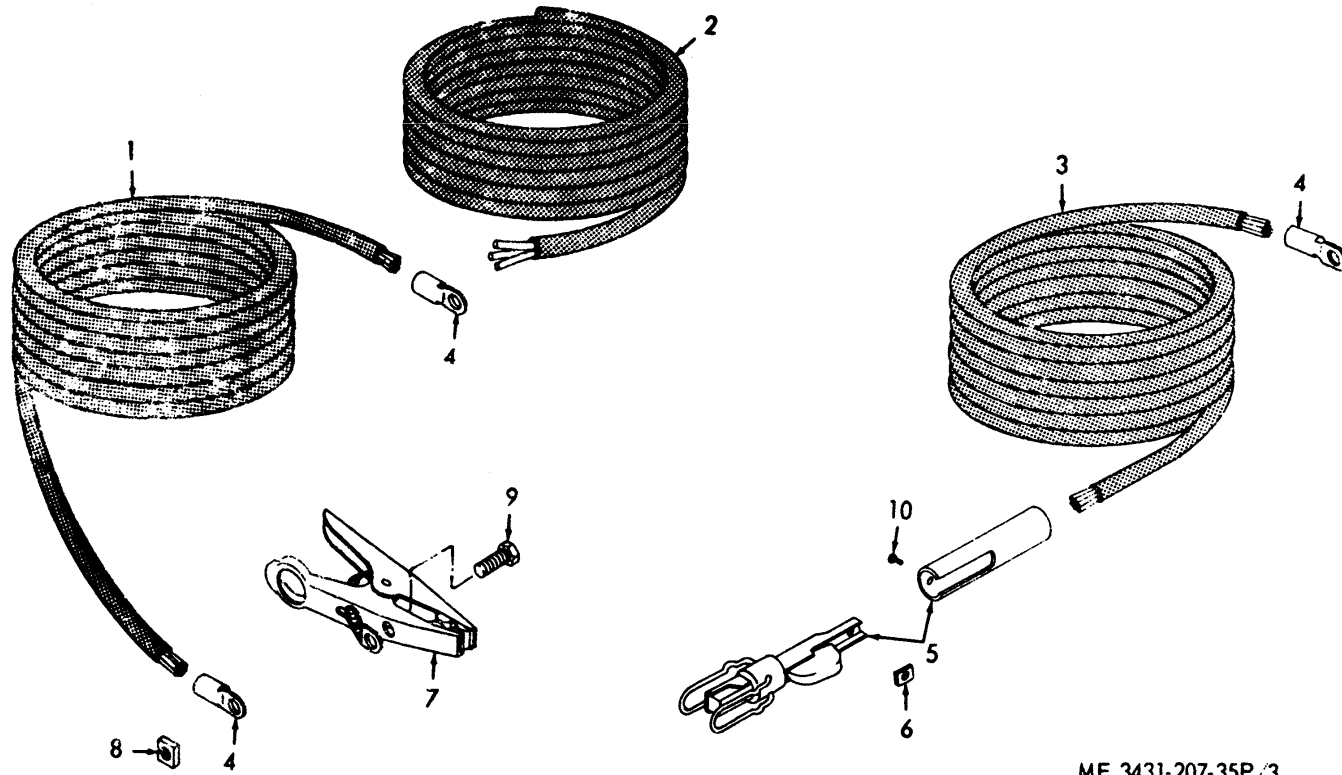


ME 3431-207-20P/2

Figure 2. Rear Axle and Wheels.

INDEX TO PARTS, FIGURE 2

Reference Number	Functional Group	Item Name
1	1100	SCREW
2	1100	WASHER
3	1311	WHEEL
4	1311	ROLLER
5	1311	RETAINER
6	1311	PIN
7	1100	NUT

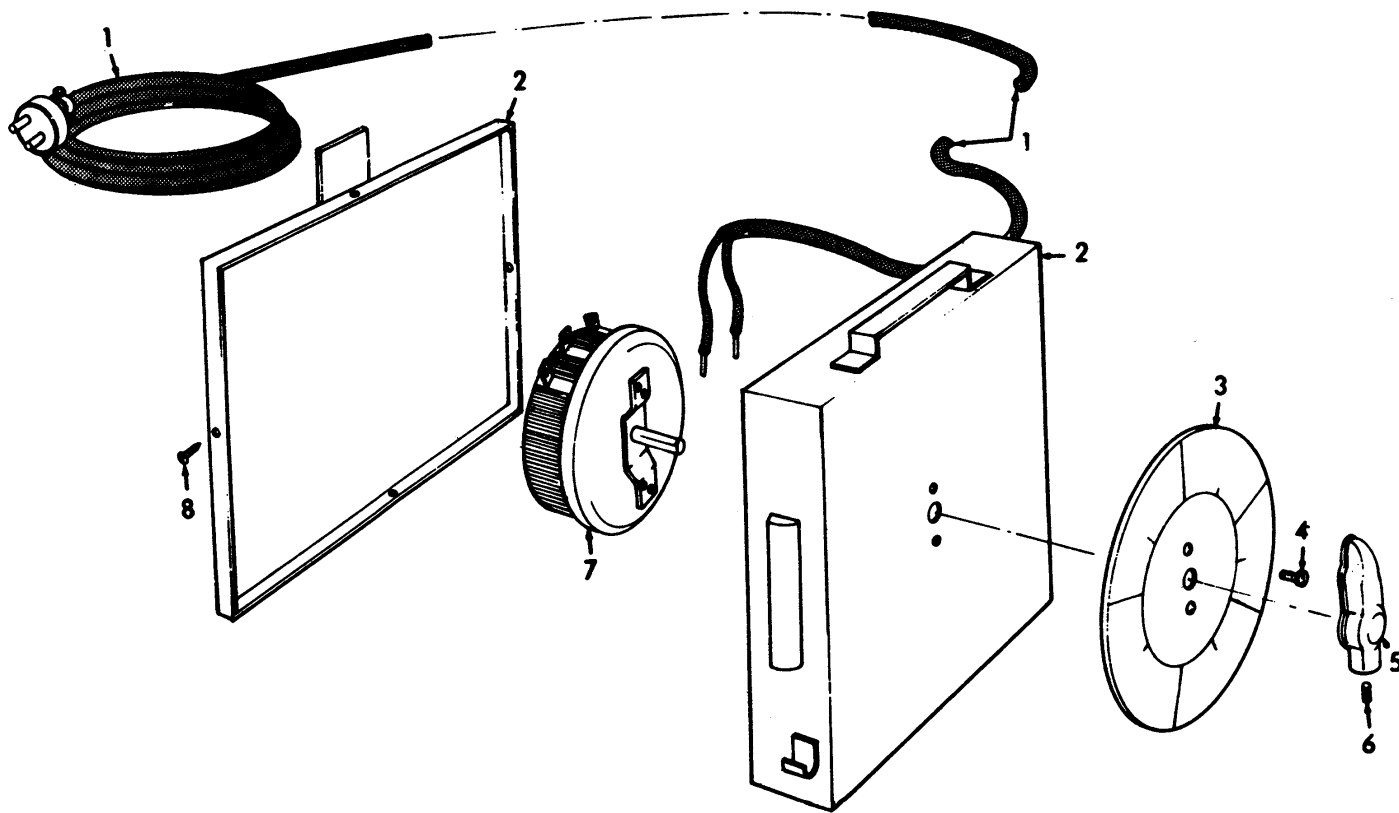


ME 3431-207-35P/3

Figure 3. Cables.

INDEX TO PARTS, FIGURE 3

Reference Number	Functional Group	Item Name
1	2202	CABLE AY
2	2202	CABLE
3	2202	CABLE AY
4	2202	TERMINAL
5	2202	HOLDER AY
6	2202	NUT
7	2202	CLAMP
8	2202	NUT
9	2202	SCREW
10	2202	SCREW



ME 3431-207-35P/4

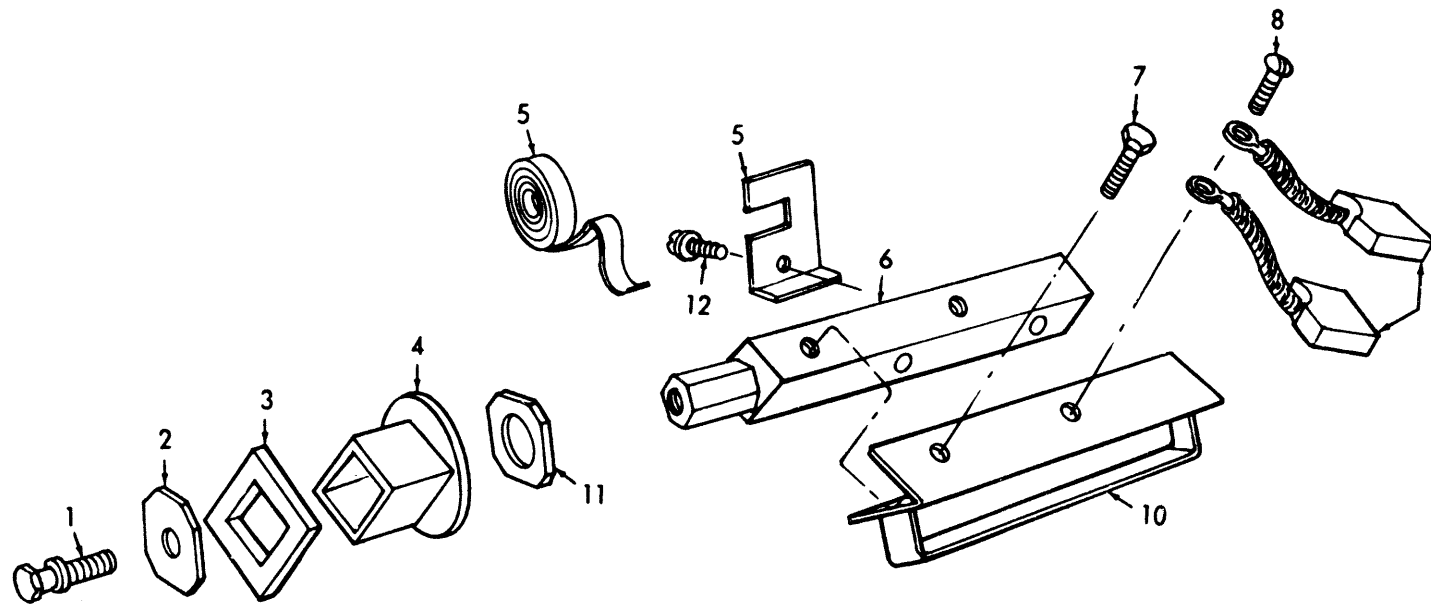
INDEX TO PARTS, FIGURE 4

Reference Number	Functional Group	Item Name
1	2202	CABLE
2	2202	CASE
3	2202	PLATE
4	2202	SCREW
5	2202	HANDLE
6	2202	SETSCREW
7	2202	RHEOSTAT
8	2202	SCREW

Figure 4. Remote Control.

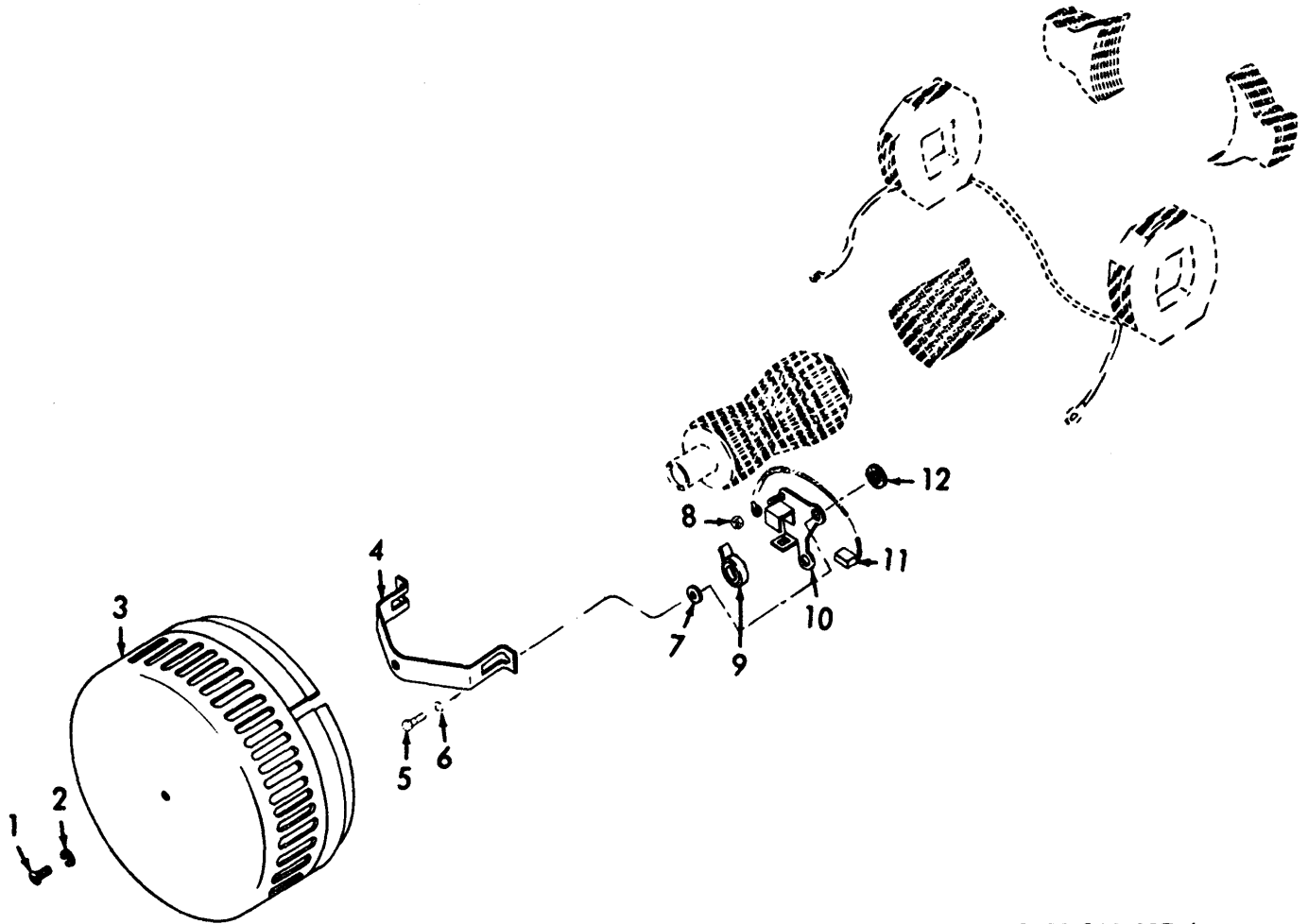
INDEX TO PARTS, FIGURE 5

Reference Number	Functional Group	Item Name
1	4403	SCREW
2	4403	WASHER
3	4403	WASHER
4	4403	TUBE </td
5	4403	SPRING
6	4403	STUD
7	4403	BOLT
8	4403	SCREW
9	4403	BRUSH
10	4403	PLATE
11	4403	WASHER
12	4403	SCREW



ME 3431-207-35P/6

Figure 5. Generator End Brush Holder Assembly.

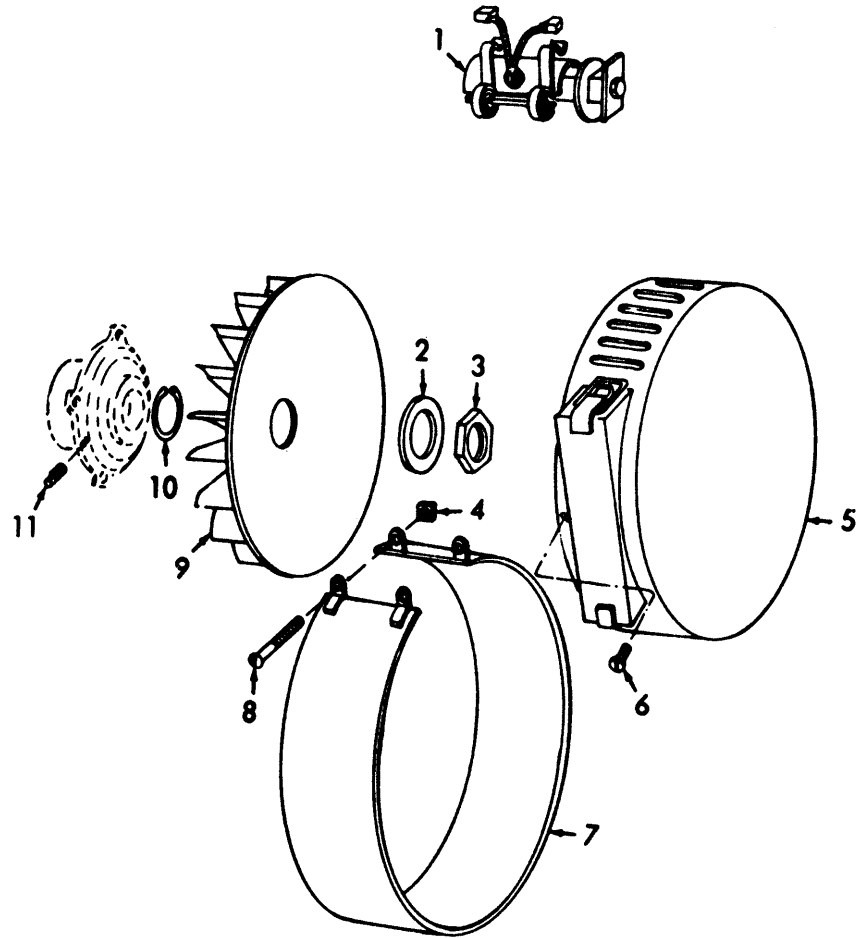


ME 3431-207-20P/6

Figure 6. Welder Exciter End.

INDEX TO PARTS, FIGURE 6

Reference Number	Functional Group	Item Name
1	4405	SCREW
2	4405	WASHER
3	4405	COVER
4	4405	BRACKET
5	4403	SCREW
6	4403	WASHER
7	4403	WASHER
8	4403	NUT
9	4403	SPRING
10	4403	BRUSH HOLDER
11	4403	BRUSH
12	4403	BUSHING

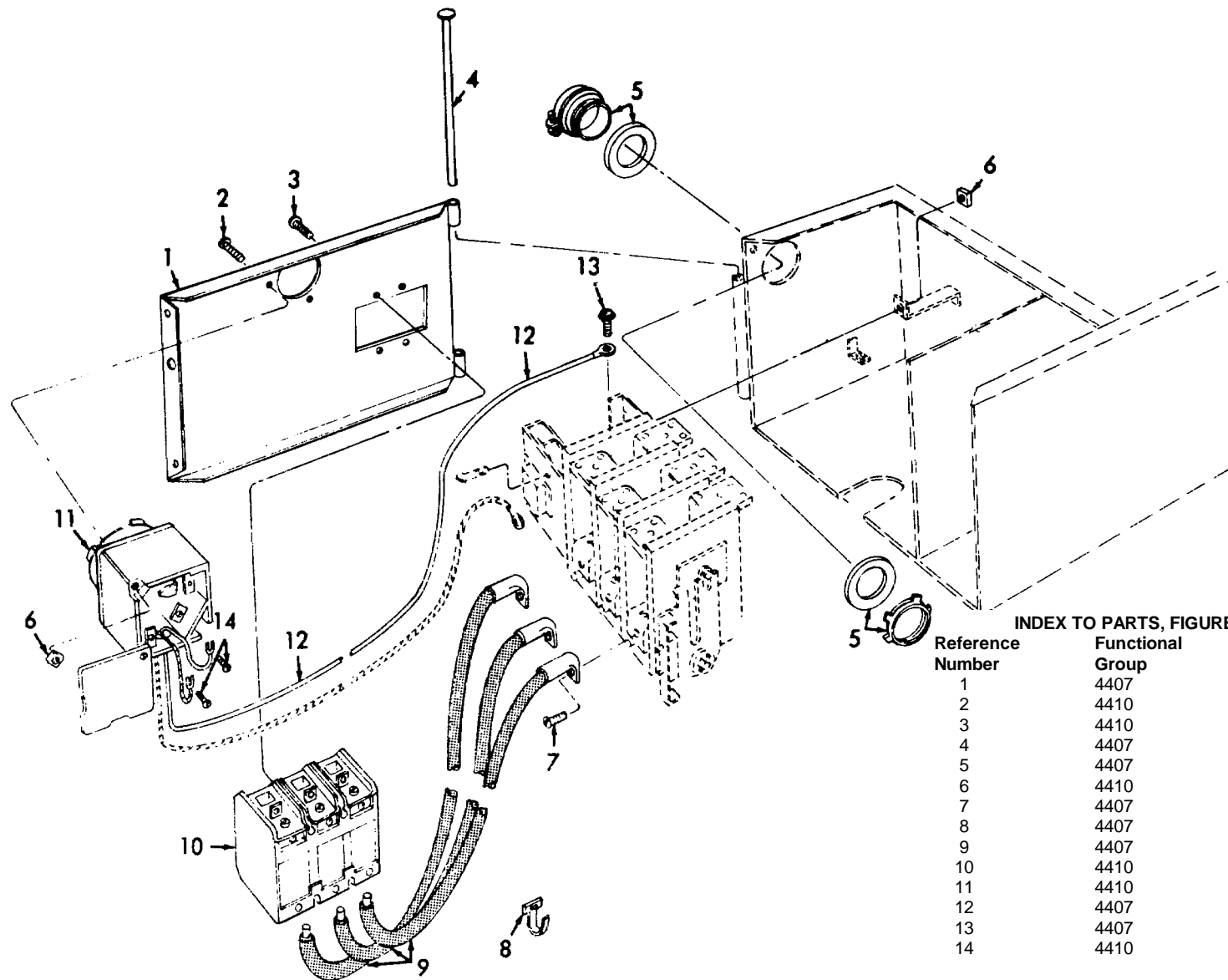


ME 3431-207-20P/7

Figure 7. Welder Generator End.

INDEX TO PARTS, FIGURE 7

Reference Number	Functional Group	Item Name
1	4403	BRUSH HOLDER AY
2	4406	WASHER
3	4406	NUT
4	4405	NUT
5	4406	GUARD
6	4406	SCREW
7	4405	COVER
8	4405	SCREW
9	4406	BLOWER
10	4406	RING
11	4405	PLUG



INDEX TO PARTS, FIGURE 8

Reference Number	Functional Group	Item Name
1	4407	DOOR
2	4410	SCREW
3	4410	SCREW
4	4407	ROD
5	4407	CLAMP
6	4410	NUT
7	4407	SCREW
8	4407	TYRAP
9	4407	LEAD
10	4410	CIRCUIT BREAKER
11	4410	SWITCH
12	4407	LEAD
13	4407	SCREW
14	4410	SCREW

ME 3431-207-20P/8

Figure 8. Control Panel Switch, Circuit Breaker, and Starter.

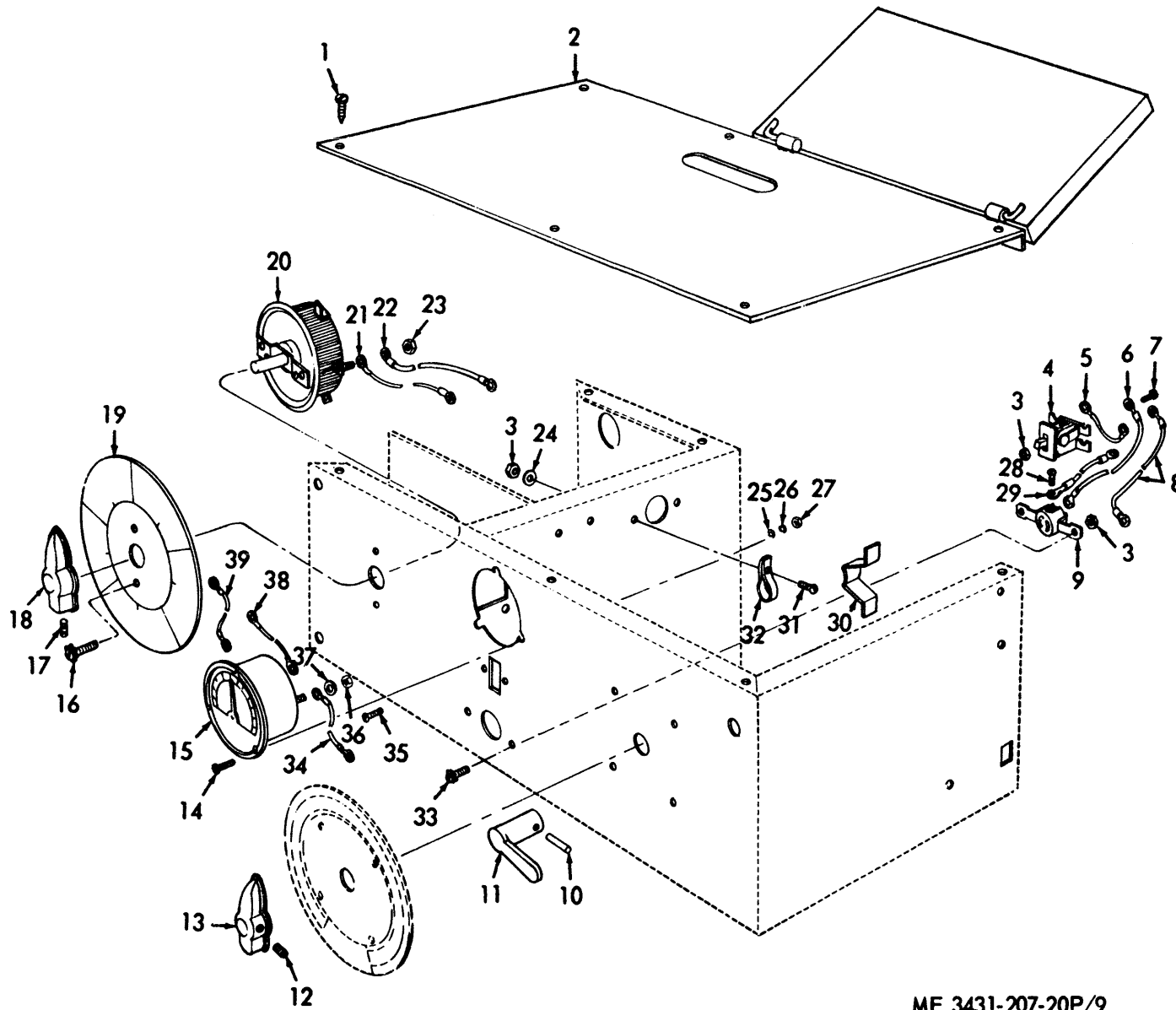
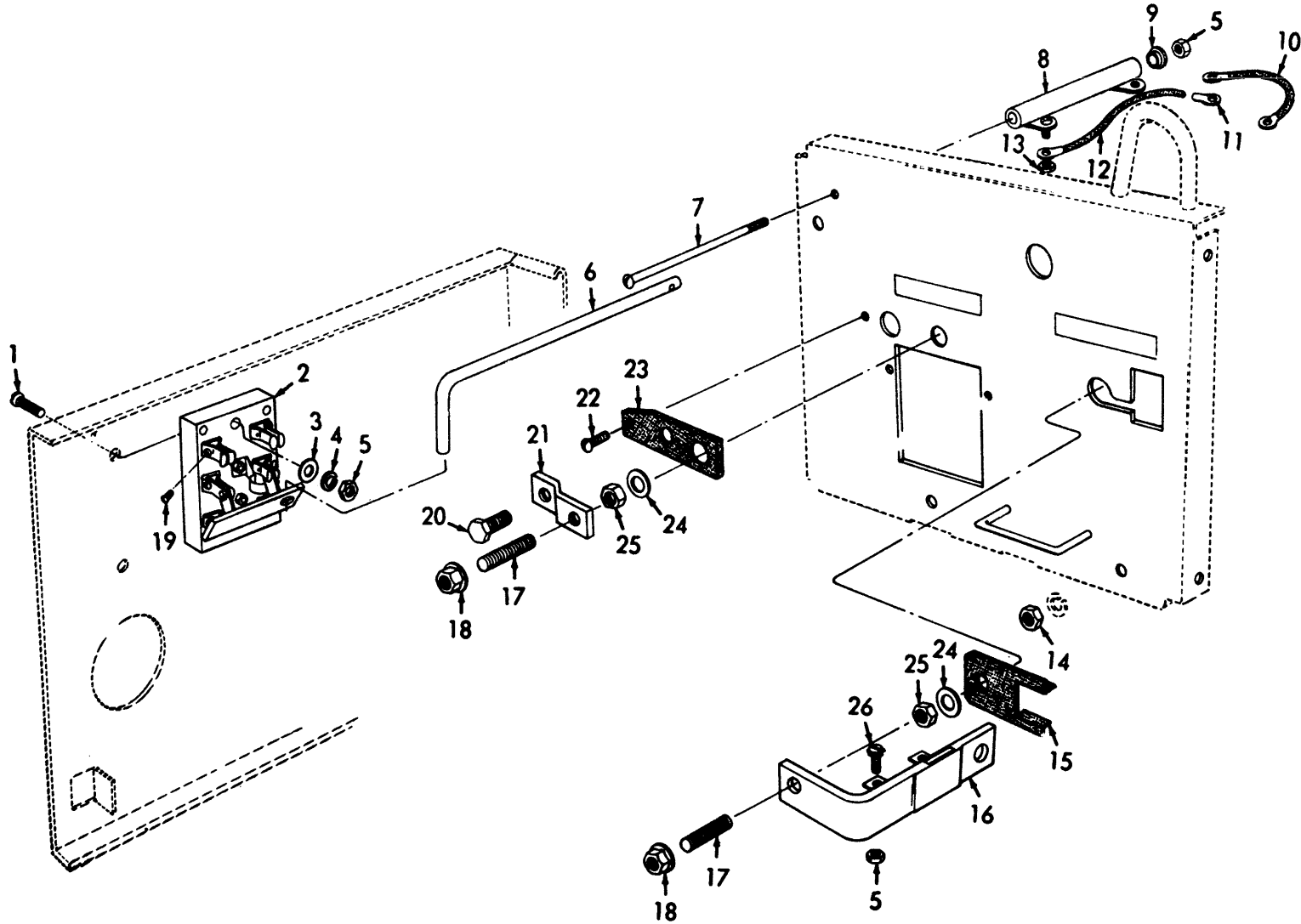


Figure 9. Control Panel.

ME 3431-207-20P/9

INDEX TO PARTS, FIGURE 9

Reference Number	Functional Group	Item Name	Reference Number	Functional Group	Item Name
1	4407	SCREW	20	4411	RHEOSTAT
2	4407	COVER	21	4407	LEAD
3	4407	NUT	22	4407	LEAD
3	4410	NUT	23	4411	NUT
4	4410	SWITCH	24	4407	WASHER
5	4407	LEAD	25	4407	WASHER
6	4407	LEAD	26	4407	WASHER
7	4410	SCREW	27	4407	NUT
8	4407	LEAD	28	4407	SCREW
9	4407	CONNECTOR	29	4407	LEAD
10	4410	PIN	30	4410	CLIP
11	4410	HANDLE	31	4407	SCREW
12	4412	SETSCREW	32	4407	CLAMP
13	4412	HANDLE	33	4407	SCREW
14	4407	SCREW	34	4407	LEAD
15	4407	VOLT-AMP METER	35	4410	SCREW
16	4411	SCREW	36	4407	NUT
17	4411	SETSCREW	37	4407	WASHER
18	4411	HANDLE	38	4407	LEAD
19	4411	PLATE	39	4407	LEAD

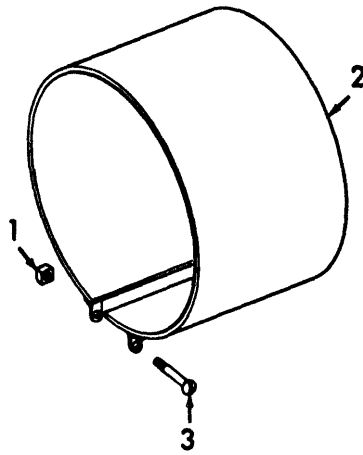


ME 3431-207-20P/10

Figure 10. Electrode and Output Stud Panel and Polarity Switch.

INDEX TO PARTS, FIGURE 10

Reference Number	Functional Group	Item Name	Reference Number	Functional Group	Item Name
1	4410	SCREW	13	4411	NUT
2	4410	SWITCH	14	4407	NUT
3	4410	WASHER	15	4407	INSULATOR
4	4410	WASHER	16	4407	STRAP
5	4407	NUT	17	4407	STUD
5	4410	NUT	18	4407	NUT
5	4411	NUT	19	4410	SCREW
6	4410	ROD	20	4407	SCREW
7	4411	SCREW	21	4407	STRAP
8	4411	RESISTOR	22	4407	SCREW
9	4411	WASHER	23	4407	INSULATOR
10	4407	LEAD	24	4407	WASHER
11	4407	TERMINAL	25	4407	NUT
12	4407	LEAD	26	4407	SCREW



ME 3431-207-20P/11

Figure 11. Motor Stator, Thermostats, and Frame.

INDEX TO PARTS, FIGURE 11

Reference Number	Functional Group	Item Name
1	4405	NUT
2	4405	COVER
3	4405	SCREW

**SECTION V. INDEX-FEDERAL STOCK NUMBER AND REFERENCE NUMBER
CROSS-REFERENCE TO INDEX NUMBER**

<u>STOCK NUMBER</u>	<u>INDEX NUMBER</u>	<u>STOCK NUMBER</u>	<u>INDEX NUMBER</u>
3431-954-4215	00025	5310-059-4264	00164
3431-954-4216	00026	5310-082-1404	00193
3431-960-2716	00213	5310-147-2065	00093
3431-986-8450	00032	5310-167-0834	00191
3431-994-9301	00040	5310-167-0834	00216
3431-994-9301	00228	5310-176-8137	00052
3442-618-0115	00041	5310-176-8137	00078
4730-044-4569	00088	5310-176-8137	00157
4730-044-4569	00089	5310-176-8137	00162
5305-010-0157	00171	5310-176-8137	00200
5305-012-5673	00043	5310-176-8137	00201
5305-042-0478	00169	5310-176-8137	00220
5305-042-0478	00170	5310-205-7782	00195
5305-042-0478	00207	5310-275-1706	00163
5305-042-0479	00202	5310-543-2705	00062
5305-044-4153	00172	5310-616-6949	00221
5305-052-6921	00091	5310-639-1098	00219
5305-057-9610	00049	5310-685-1429	00030
5305-059-8248	00212	5310-685-1429	00158
5305-059-8249	00206	5310-685-1429	00160
5305-071-1767	00031	5310-685-1429	00161
5305-151-1229	00205	5310-822-0984	00156
5305-151-1229	00214	5310-822-0984	00159
5305-269-3209	00061	5310-879-6493	00192
5305-608-8307	00039	5310-985-5844	00042
5305-608-8307	00173	5310-988-5844	00155
5305-608-8307	00174	5315-282-1448	00006
5305-608-8307	00226	5315-282-1448	00015
5305-637-1125	00176	5315-282-1448	00016
5305-725-4183	00007	5340-598-8062	00103
5305-725-4183	00011	5905-718-6063	00037
5305-817-5443	00227	5905-718-6063	00242
5305-836-8476	00175	5905-718-8063	00225
5305-840-6694	00166	5905-752-7467	00223
5305-889-3002	00105	5925-954-4211	00197
5305-965-7306	00099	5930-960-2786	00210
5305-984-5674	00066	5930-961-1192	00211
5305-984-6206	00053	5935-161-9764	00104
5305-984-6212	00208	5940-020-0005	00127
5305-984-6217	00209	5940-050-6209	00141
5305-988-1721	00064	5940-155-9686	00112
5305-988-1721	00167	5940-155-9686	00145
5305-988-1721	00168	5940-155-9686	00149
5305-988-9265	00090	5940-177-7910	00115
5305-988-9265	00092	5940-177-7910	00119
5306-225-8494	00058	5940-177-7910	00123
5307-207-1867	00038	5940-177-7910	00130
5307-984-7541	00182	5940-177-7910	00133
5307-984-7541	00185	5940-177-7910	00137
5310-010-3028	00005	5940-504-5874	00153
5310-010-3028	00010	5940-504-5878	00144
5310-010-6495	00194	5940-504-5878	00148
5310-011-5545	00054	5940-505-5878	00152
5310-012-0214	00065	5940-636-7114	00140
5310-012-0384	00184	5940-955-9445	00044
5310-012-0384	00188	5970-587-5717	00069
5310-013-1395	00086	5970-967-4278	00076
5310-013-1395	00087	5970-967-4279	00074
5310-017-8599	00012	5975-027-4581	00186
5310-045-3296	00215	5975-258-0126	00029

<u>STOCK NUMBER</u>	<u>INDEX NUMBER</u>	<u>STOCK NUMBER</u>	<u>INDEX NUMBER</u>
5975-296-6086	00102	6145-195-5608	00138
5977-088-7132	00073	6145-195-5608	00142
5977-088-7134	00057	6145-195-5608	00234
5977-237-1582	00077	6145-578-7521	00113
5977-237-1609	00056	6145-578-7521	00128
6105-031-2836	00075	6145-578-7521	00146
6115-587-5722	00067	6145-578-7521	00150
6115-980-5837	00181	6145-578-7521	00154
6115-980-5837	00238	6145-578-7521	00235
6145-195-5608	00117	6145-807-8257	00028
6145-195-5608	00121	6145-807-8257	00233
5145-195-5608	00125	6625-954-2709	00187
6145-195-5608	00131	6625-954-2873	00177
6145-195-5608	00135		

<u>REFERENCE NO.</u>	<u>MFG CODE</u>	<u>INDEX NO.</u>	<u>REFERENCE NO.</u>	<u>MFG CODE</u>	<u>INDEX NO.</u>
AN565D1024H3	88044	00040	M6964-9A	36232	00057
AN565D1024H3	88044	00228	M7393	36232	00083
B71G	59730	00141	S4519	36232	00096
B85G	59730	00140	S4934	36232	00187
B86G	59730	00115	S5717	36232	00022
B86G	59730	00119	S6116	36232	00021
B86G	59730	00123	S6531A	36232	00073
B86G	59730	00130	S6602-2	36232	00177
B86G	59730	00133	S6650	36232	00107
B86G	59730	00137	S6751-1	36232	00139
B87G	59730	00116	S6751-3	36232	00129
B87G	59730	00120	S6751-4	36232	00126
B87G	59730	00124	S6848-2	36232	00082
B87G	59730	00134	S7297-1	36232	00198
C36	59730	00112	S7995-3	36232	00230
C36	59730	00145	S8158	36232	00035
C36	59730	00149	S8158	36232	00035
EPW1001	36024	00034	S8158	36232	00218
EOW1000	36024	00032	S8158	36232	00239
EOW1003	36232	00033	S9225-1	36232	00079
INS	36232	00041	S9262-34	36232	00017
LA2175	36024	00100	S9262-34	36232	00018
LA300-1831	36024	00026	S9262-34	36232	00241
LA300-1832	36024	00025	TY25	59730	00186
L2944-2	36232	00095	T10210-1	36232	00098
M10088	36232	00036	T10210-1	36232	00098
M10088	36232	00222	T1095	36232	00080
M10088	36232	00240	T10990	36232	00048
M4129	36232	00085	T120	36024	00044
M4165A1	36232	00084	T1450	36232	00069
M4941	36232	00211	T2414	36232	00071
M5090C	36232	00037	T2719	36232	00183
M5090C	36232	00242	T2719	36232	00189
M50906C	36232	00225	T2719	36232	00246
M5939	36232	00106	T3107	36232	00097
M6574A	36232	00213	T3110	36232	00100
M6963-6	36232	00068	T344	36232	00077
M6964-1B	36232	00059	T3846	36232	00108

<u>REFERENCE NO.</u>	<u>MFG CODE</u>	<u>INDEX NO.</u>	<u>REFERENCE NO.</u>	<u>MFG CODE</u>	<u>INDEX NO.</u>
T3961	36232	00046	T7845	36232	00179
T3962	36232	00047	T8141	36232	00178
T479	36232	00070	T8167	36232	00074
T5411	36232	00181	T8230-1	36232	00180
T5411	36232	00238	T8280	36232	00223
T5418	36232	00199	T8485	36232	00190
T6380	36232	00204	T8485	36232	00245
T6887	36232	00075	T8495	36232	00067
T6931-2	36232	00182	T9020	36232	00072
T6931-2	36232	00185	15234	03743	00102
T6931-2	36232	00244	20E1525	01411	00197
T6968	36232	00056	3-32X3-4	00287	00203
T6988-1	36232	00003	32994	04618	00144
T7208	36232	00019	32994	04618	00148
T7208	36232	00020	32994	04618	00152
T7208	36232	00243	35135	04618	00153
T7233	36232	00004	7210	74545	00104
T7626	36232	00076	9623	74545	00210
T7843	36232	00109			

By Order of the Secretary of the Army:

Official:

KENNETH G. WICKHAM,
Major General, United States Army,
The Adjutant General

W. C. WESTMORELAND,
General, United States Army
Chief of Staff.

Distribution:

To be distributed in accordance with DA Form 12-25, Section I, (qty rqr block No. 182) Organizational Maintenance requirements for Welding Equipment.

☆U.S. GOVERNMENT PRINTING OFFICE: 1983-664-028/6309

RECOMMENDED CHANGES TO EQUIPMENT TECHNICAL PUBLICATIONS

 <div style="border: 1px solid black; border-radius: 15px; padding: 5px; display: inline-block; margin-left: 20px;"> <p style="margin: 0;"><i>THEN...JOT DOWN THE DOPE ABOUT IT ON THIS FORM. CAREFULLY TEAR IT OUT, FOLD IT AND DROP IT IN THE MAIL.</i></p> </div>		SOMETHING WRONG WITH PUBLICATION	
		FROM: (PRINT YOUR UNIT'S COMPLETE ADDRESS)	
PUBLICATION NUMBER		DATE SENT	
PUBLICATION DATE		PUBLICATION TITLE	
BE EXACT PIN-POINT WHERE IT IS			
PAGE NO.	PARA- GRAPH	FIGURE NO.	TABLE NO.
<div style="border: 1px solid black; height: 400px; margin-top: 10px;"> <p style="text-align: center; font-weight: bold; margin-top: 10px;">IN THIS SPACE, TELL WHAT IS WRONG AND WHAT SHOULD BE DONE ABOUT IT.</p> </div>			
PRINTED NAME, GRADE OR TITLE AND TELEPHONE NUMBER			SIGN HERE

The Metric System and Equivalents

Linear Measure

1 centimeter = 10 millimeters = .39 inch
 1 decimeter = 10 centimeters = 3.94 inches
 1 meter = 10 decimeters = 39.37 inches
 1 dekameter = 10 meters = 32.8 feet
 1 hectometer = 10 dekameters = 328.08 feet
 1 kilometer = 10 hectometers = 3,280.8 feet

Weights

1 centigram = 10 milligrams = .15 grain
 1 decigram = 10 centigrams = 1.54 grains
 1 gram = 10 decigrams = .035 ounce
 1 decagram = 10 grams = .35 ounce
 1 hectogram = 10 decagrams = 3.52 ounces
 1 kilogram = 10 hectograms = 2.2 pounds
 1 quintal = 100 kilograms = 220.46 pounds
 1 metric ton = 10 quintals = 1.1 short tons

Liquid Measure

1 centiliter = 10 milliliters = .34 fl. ounce
 1 deciliter = 10 centiliters = 3.38 fl. ounces
 1 liter = 10 deciliters = 33.81 fl. ounces
 1 dekaliter = 10 liters = 2.64 gallons
 1 hectoliter = 10 dekaliters = 26.42 gallons
 1 kiloliter = 10 hectoliters = 264.18 gallons

Square Measure

1 sq. centimeter = 100 sq. millimeters = .155 sq. inch
 1 sq. decimeter = 100 sq. centimeters = 15.5 sq. inches
 1 sq. meter (centare) = 100 sq. decimeters = 10.76 sq. feet
 1 sq. dekameter (are) = 100 sq. meters = 1,076.4 sq. feet
 1 sq. hectometer (hectare) = 100 sq. dekameters = 2.47 acres
 1 sq. kilometer = 100 sq. hectometers = .386 sq. mile

Cubic Measure

1 cu. centimeter = 1000 cu. millimeters = .06 cu. inch
 1 cu. decimeter = 1000 cu. centimeters = 61.02 cu. inches
 1 cu. meter = 1000 cu. decimeters = 35.31 cu. feet

Approximate Conversion Factors

<i>To change</i>	<i>To</i>	<i>Multiply by</i>	<i>To change</i>	<i>To</i>	<i>Multiply by</i>
inches	centimeters	2.540	ounce-inches	Newton-meters	.007062
feet	meters	.305	centimeters	inches	.394
yards	meters	.914	meters	feet	3.280
miles	kilometers	1.609	meters	yards	1.094
square inches	square centimeters	6.451	kilometers	miles	.621
square feet	square meters	.093	square centimeters	square inches	.155
square yards	square meters	.836	square meters	square feet	10.764
square miles	square kilometers	2.590	square meters	square yards	1.196
acres	square hectometers	.405	square kilometers	square miles	.386
cubic feet	cubic meters	.028	square hectometers	acres	2.471
cubic yards	cubic meters	.765	cubic meters	cubic feet	35.315
fluid ounces	milliliters	29.573	cubic meters	cubic yards	1.308
pints	liters	.473	milliliters	fluid ounces	.034
quarts	liters	.946	liters	pints	2.113
gallons	liters	3.785	liters	quarts	1.057
ounces	grams	28.349	liters	gallons	.264
pounds	kilograms	.454	grams	ounces	.035
short tons	metric tons	.907	kilograms	pounds	2.205
pound-feet	Newton-meters	1.356	metric tons	short tons	1.102
pound-inches	Newton-meters	.11296			

Temperature (Exact)

°F	Fahrenheit temperature	5/9 (after subtracting 32)	Celsius temperature	°C
----	---------------------------	-------------------------------	------------------------	----

**TM 5-3431-207-20P WELDING MACHINE, ARC:
GENERATOR; ELECTRIC MOTOR DRIVEN - 1968**

PIN: 025501-000